

## Ms Lola LLC STANDARD HAIR COLORS

---

Choosing the right hair color(s) for your custom medical wigs is very important.

Whether you're a basic #1, #1B, or #2 hair color person, or like spicy blonds, golds and reds, here are a few factors to consider before making your final decision about color:

- Virgin Wigs last longest because the hair has not been chemically processed.
- Dark wigs in general last longer than light colored wigs because high lift colors dry out the hair, which can cause breakage and shedding.
- Light colored curly and wavy wigs, especially longer lengths, tangle more quickly than ones that do not have processed color.
- Curly and wavy wigs should not be hot curled or flat ironed.

### More about colors:

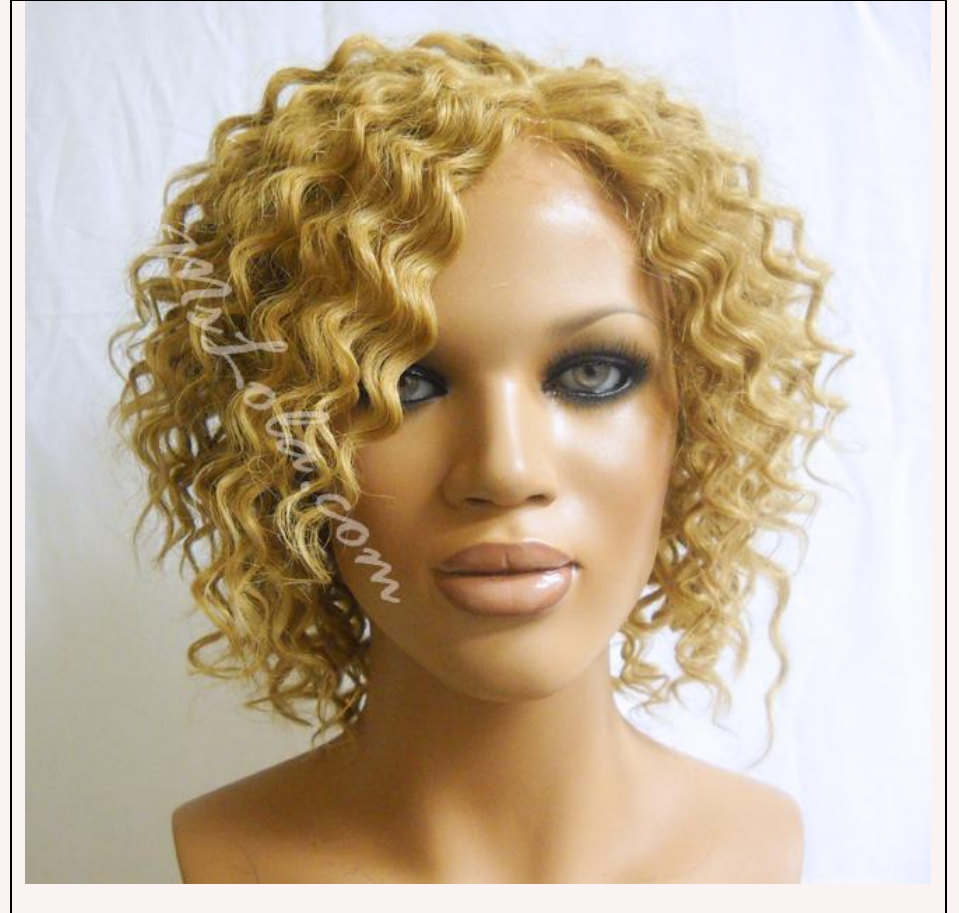
**Bold Highlights** are bold streaks of color(s) placed anywhere throughout the wig. See Color Chart.

**Soft Highlights** are subtle streaks of color(s) placed anywhere throughout the wig. See Color Chart.

**2/Tone Coloring** is one base color, applied to 2 to 4 inch roots. The hair shaft can be all one color or highlighted with one or more other colors.

If you have questions about color combinations and would like help placing your order, you can schedule a phone or in-person consultation with Ms Lola. [Click here for more...](#)

The color chart below depicts our true colors, however digital images can display differently according to individual computer monitors, therefore we cannot be responsible for variations in colors between the actual sample and your screen. To ensure accuracy, we recommend that you order our human hair swatches of these colors at our [online store](#) to preview hair colors in person before placing your custom wig order.



## Hair Color Chart

1- Jet Black

1B- Off Black

2- Darkest Brown

3- Medium Brown

4- Medium Light Brown

6-Med Chestnut Brown

8- Light Chestnut Brown



**9-Chocolate Copper**

**10-Med Golden Brown**

**12- Lt Chestnut Brown**

**14-Lt Reddish Blond**

**18-Dark Ash Blond**

**22-Golden Blond**



**27-Lt Strawberry Blond**

**27A-Strawberry Blond**

**30-Light Auburn**

**33-Dark Auburn**

**4- Medium Light Brown**

**144-Gold**

**350-Copper Brick**

**613-Pre-Bleached**





You may also submit your own color samples and we will match them for your wig or hair unit.

After receiving an order confirmation from MsLola, please ship samples to:

Ms Lola LLC

Customer Service

1113 N Road Street

Elizabeth City, NC 27909