

**Ms Lola LLC** represents professionalism, experience, compassion, reliability and dedication to the hair replacement industry. Our medical wigs and hair units are made with expert craftsmanship and the finest human hair and lace materials available. Finally, you're going to get the gorgeous hair you deserve!

---



**Our Medical Wigs** can be further customized with one of the styles featured within this catalogue. Scroll from page to page to see the array of choices available. Please note the *Style Code* for any styles you would like applied to your custom order and then enter it into the online order form, or give it to Ms Lola during your personal consultation with her.

For help with determining specifications for your custom medical wig, see the Specifications page at [MsLola.com](https://www.MsLola.com).

**Celebrity Style Code: Jessica**

Specifications below are given for the pictured style. You will replace them with your own when submitting the custom order form online or with Ms Lola during your phone consultation with her.



**Unit Specifications:**

Hair Origin: Chinese Virgin

Hair Texture: Body Wave

Hair Color: #T27A/27/613

Hair Length: 8" Full Length

Hair Density: 90%

Bleach Knots: Yes

Lace Type: Resilient Swiss

Lace Color: Transparent

Price: \$575



### **Celebrity Style Code: Keri**

Specifications below are given for the pictured style. You will replace them with your own when submitting the custom order form online or with Ms Lola during your phone consultation with her.



#### **Unit Specifications:**

Hair Origin: Chinese Virgin

Hair Texture: Straight

Hair Color: #1

Hair Length: 14" Full Length

Hair Density: 110%

Bleach Knots: No

Lace Type: Resilient Swiss

Lace Color: Light Brown

Price: \$545

### **Celebrity Style Code: Kelly**

Specifications below are given for the pictured style. You will replace them with your own when submitting the custom order form online or with Ms Lola during your phone consultation with her.



#### **Unit Specifications:**

Hair Origin: Chinese Virgin  
Hair Texture: Loose Wave  
Hair Color: #1  
Hair Length: 18" Layered  
Hair Density: 150%  
Bleach Knots: No  
Cap Design: Full Lace  
Lace Type: Resilient Swiss  
Lace Color: Dark Brown  
Price: \$650

### **Celebrity Style Code: Diana**

Specifications below are given for the pictured style. You will replace them with your own when submitting the custom order form online or with Ms Lola during your phone consultation with her.



#### **Unit Specifications:**

Hair Origin: European Virgin  
Hair Texture: Straight  
Hair Color: #T6/6/30/613  
Hair Length: 14" Full Length  
Hair Density: 80%  
Bleach Knots: Yes  
Lace Type: Resilient Swiss  
Lace Color: Transparent  
Price: \$720

### **Celebrity Style Code: Garcelle**

Specifications below are given for the pictured style. You will replace them with your own when submitting the custom order form online or with Ms Lola during your phone consultation with her.



#### **Unit Specifications:**

Hair Origin: Indian Remy  
Hair Texture: Deep Wave  
Hair Color: #1  
Hair Length: 18" Layered  
Hair Density: 100%  
Bleach Knots: No  
Lace Type: Resilient Swiss  
Lace Color: Medium Brown  
Price: \$450

## Celebrity Style Code: Rihanna

Specifications below are given for the pictured style. You will replace them with your own when submitting the custom order form online or with Ms Lola during your phone consultation with her.



### Unit Specifications:

Hair Origin: Brazilian Virgin

Hair Texture: Coarse Yaki

Hair Color: #1B

Hair Length: 14" Full Length

Hair Density: 100%

Bleach Knots: No

Lace Type: Resilient Swiss

Lace Color: Light Brown

Price: \$645

## Celebrity Style Code: Angelina

Specifications below are given for the pictured style. You will replace them with your own when submitting the custom order form online or with Ms Lola during your phone consultation with her.

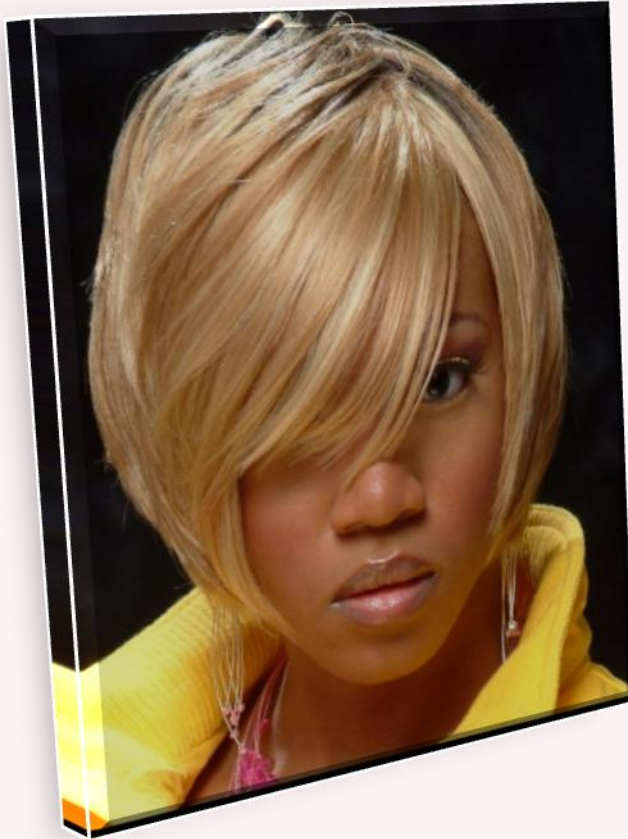


### Unit Specifications:

Hair Origin: European Virgin  
Hair Texture: Body Wave  
Hair Color: #3/33  
Hair Length: 20" Full Length  
Hair Density: 110%  
Bleach Knots: Yes  
Lace Type: Resilient Swiss  
Lace Color: Transparent  
Price: \$815

### **Celebrity Style Code: Tia**

Specifications below are given for the pictured style. You will replace them with your own when submitting the custom order form online or with Ms Lola during your phone consultation with her.



#### **Unit Specifications:**

Hair Origin: Chinese Remy

Hair Texture: Straight

Hair Color: #T2/27A/613

Hair Length: 10" Layered

Hair Density: 80%

Bleach Knots: Yes

Lace Type: Resilient Swiss

Lace Color: Medium Brown

Price: \$565

### **Celebrity Style Code: Nicole**

Specifications below are given for the pictured style. You will replace them with your own when submitting the custom order form online or with Ms Lola during your phone consultation with her.



#### **Unit Specifications:**

Hair Origin: Chinese Virgin

Hair Texture: Body Wave

Hair Color: #T4/613/18

Hair Length: 10" One Length

Hair Density: 100%

Bleach Knots: Yes

Lace Type: Resilient Swiss

Lace Color: Transparent

Price: \$640

### **Celebrity Style Code: Keyshia**

Specifications below are given for the pictured style. You will replace them with your own when submitting the custom order form online or with Ms Lola during your phone consultation with her.



#### **Unit Specifications:**

Hair Origin: Chinese Virgin

Hair Texture: Big Curl

Hair Color: #T4/30

Hair Length: 8" Layered

Hair Density: 100%

Bleach Knots: Yes

Lace Type: Resilient Swiss

Lace Color: Light Brown

Price: \$550

## Celebrity Style Code: Gabrielle

Specifications below are given for the pictured style. You will replace them with your own when submitting the custom order form online or with Ms Lola during your phone consultation with her.

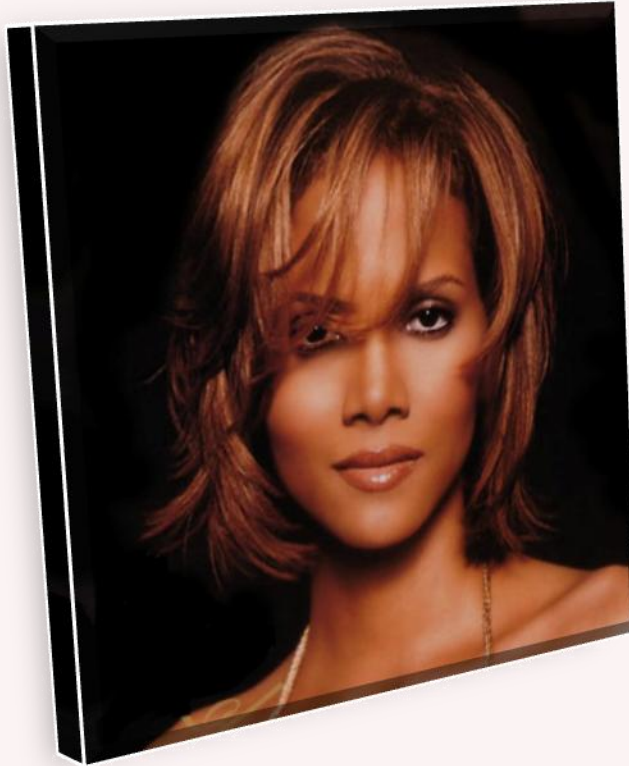


### Unit Specifications:

Hair Origin: Brazilian Virgin  
Hair Texture: Yaki Loose Wave  
Hair Color: #2/4  
Hair Length: 14" Layered  
Hair Density: 110%  
Bleach Knots: Yes  
Lace Type: Resilient Swiss  
Lace Color: Medium Brown  
Price: \$670

## Celebrity Style Code: Halle

Specifications below are given for the pictured style. You will replace them with your own when submitting the custom order form online or with Ms Lola during your phone consultation with her.



### Unit Specifications:

Hair Origin: European Virgin

Hair Texture: Yaki Straight

Hair Color: #T2/4/30

Hair Length: 8" Layered

Hair Density: 80%

Bleach Knots: Yes

Lace Type: Resilient Swiss

Lace Color: Light Brown

\$550

### **Celebrity Style Code: Jennifer**

Specifications below are given for the pictured style. You will replace them with your own when submitting the custom order form online or with Ms Lola during your phone consultation with her.



#### **Unit Specifications:**

Hair Origin: Indian Virgin

Hair Texture: Yaki

Hair Color: #T1B/30

Hair Length: 22" Full Length

Hair Density: 100%

Bleach Knots: No

Lace Type: Resilient Swiss

Lace Color: Medium Brown

Price: \$665

### **Celebrity Style Code: Patti**

Specifications below are given for the pictured style. You will replace them with your own when submitting the custom order form online or with Ms Lola during your phone consultation with her.



#### **Unit Specifications:**

Hair Origin: Malaysian Virgin

Hair Texture: Big Curl

Hair Color: #4/3

Hair Length: 14" Layered

Hair Density: 100%

Bleach Knots: Yes

Lace Type: Resilient Swiss

Lace Color: Medium Brown

Price: \$625

### **Celebrity Style Code: Kim**

Specifications below are given for the pictured style. You will replace them with your own when submitting the custom order form online or with Ms Lola during your phone consultation with her.



#### **Unit Specifications:**

Hair Origin: Chinese Virgin

Hair Texture: Straight

Hair Color: #1B/2

Hair Length: 20" Layered

Hair Density: 100%

Bleach Knots: Yes

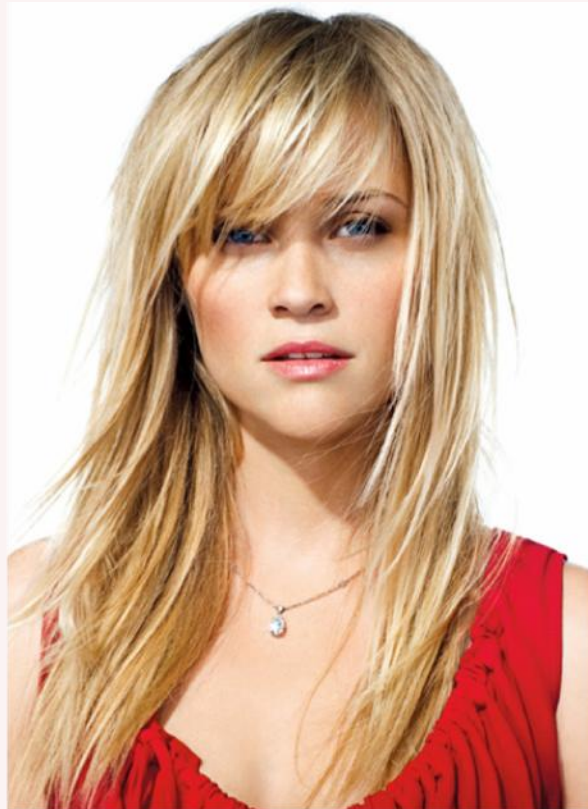
Lace Type: Resilient Swiss

Lace Color: Transparent

Price: \$615

## Celebrity Style Code: Reese

Specifications below are given for the pictured style. You will replace them with your own when submitting the custom order form online or with Ms Lola during your phone consultation with her.



### Unit Specifications:

Hair Origin: Chinese Virgin

Hair Texture: Silky Straight

Hair Color: #T8/27/613

Hair Length: 16" Layered

Hair Density: 80%

Bleach Knots: Yes

Lace Type: Resilient Swiss

Lace Color: Transparent

Price: \$610

### **Celebrity Style Code: Vivica**

Specifications below are given for the pictured style. You will replace them with your own when submitting the custom order form online or with Ms Lola during your phone consultation with her.



#### **Unit Specifications:**

Hair Origin: Brazilian Virgin  
Hair Texture: Yaki Big Curl  
Hair Color: #2/3  
Hair Length: 22" Layered  
Hair Density: 150%  
Bleach Knots: Yes  
Lace Type: Resilient Swiss  
Lace Color: Medium Brown  
Price: \$765

## Celebrity Style Code: Tyra

Specifications below are given for the pictured style. You will replace them with your own when submitting the custom order form online or with Ms Lola during your phone consultation with her.



### Unit Specifications:

Hair Origin: Malaysian Virgin

Hair Texture: Coarse Yaki

Hair Color: #2/6

Hair Length: 18" Layered

Hair Density: 150%

Bleach Knots: Yes

Lace Type: Resilient Swiss

Lace Color: Transparent

Price: \$750

